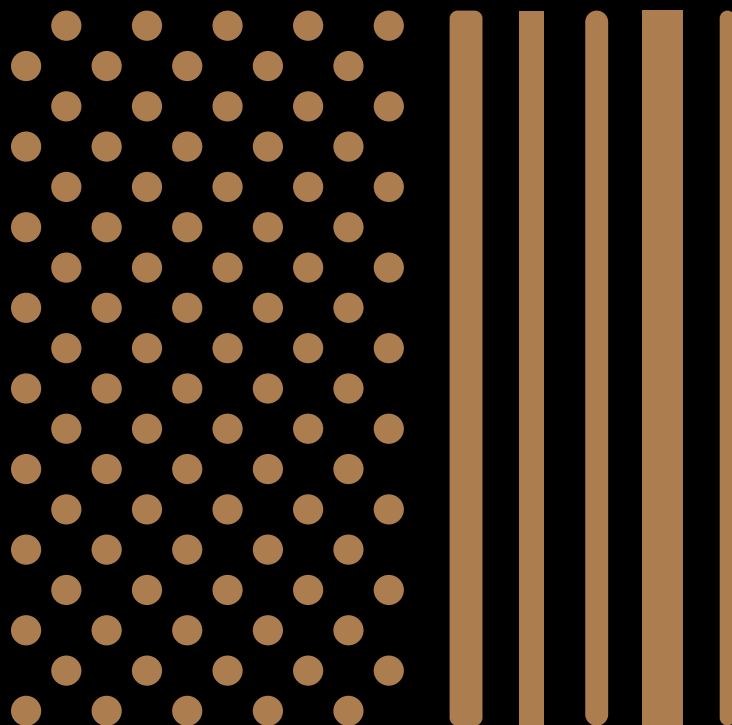


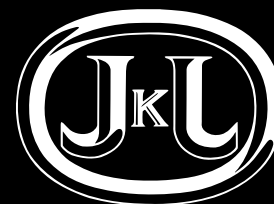
Your **safe** and
independent **journey**.

ENG

T-METAL



Refer to technical standard to customize



Your **safe** and
independent **journey**.

ENG

T-METAL

low architectural impact tactile warning strips and studs



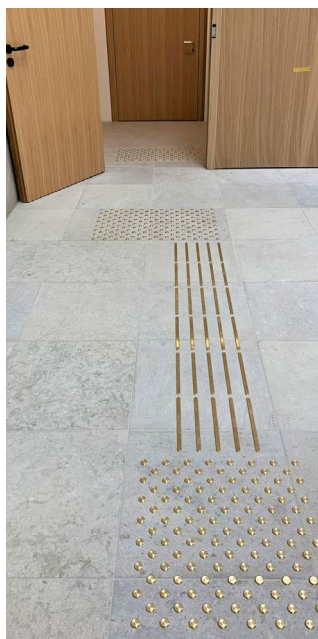
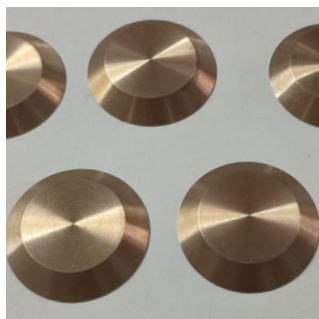
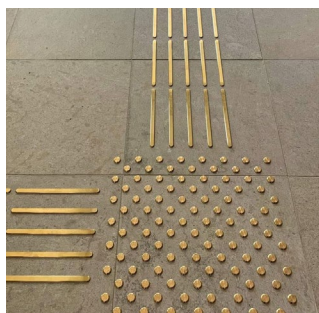
Refer to technical standard to customize

T-Metal Tactile Indicator System

The T-Metal single tactile indicator system is designed to improve the mobility of visually impaired people and is produced in various metals, including **aluminum, brass, steel, and bronze**, making it ideal for both **indoor and outdoor installations**. Designed to have a **minimal yet elegant architectural impact**, it consists of bars for orientation and guidance, and hemispherical or truncated cone-shaped attention studs. The spacing, height, and radius, as required by the relevant technical standards, are arranged in compliance with dimensional parameters. The elements must be positioned according to the meas-

urements and distances required by the standards. The arrangement can be customized based on needs using a special matrix.

Recent studies demonstrate that **TWSIs are useful not only for the blind and visually impaired, but for all users, as they send mechanical stimuli that prompt attention to the surrounding environment**. The study results show that the presence of tactile sensors has an overall positive effect on the walking of sighted people as well.



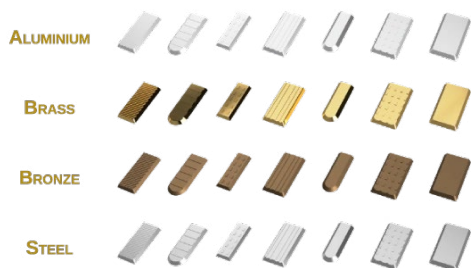
COMPONENTI

Tactile indicators with low architectural impact

i Description

i indications

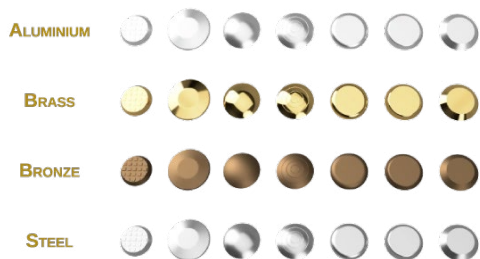
01 STRAIGHT



i Single strips made of different materials and sizes with straight or round edges, arranged side by side using special templates to comply with the dimensional parameters of the relevant technical standards.

i They indicate a safe direction of travel.

02 STOP/DANGER



i Hemispherical or truncated domes made of different materials and sizes arranged parallel or diagonally using special templates to comply with the dimensional parameters of the relevant technical standards.

i They indicate a source of danger or draw the user's attention.



Upon request, all components can be supplied with double-sided adhesive tape

JKJ tactile indicators are designed to be **high-performance and durable**. However, installation is a key aspect of their durability, and JKJ guarantees **maximum durability** if installed according to the guidelines summarized below.

Installation of T-Metal System with double-sided tape

T-Metal tactile indicators can be **supplied with double-sided tape**. For maximum adhesion and installation precision, the tactile indicators must be installed using specific templates.

The installation surfaces must be uniformly dry, mechanically resistant, and free of dust, loose particles, cracks, paint, wax, oil, rust, and anything else that could compromise adhesion.

For preliminary cleaning of surfaces, use solvents containing a mixture of isopropyl alcohol or heptane. When using solvents, follow the manufacturer's instructions and warnings.

The adhesion depends on the degree of contact between the adhesive and the surface; therefore, a minimum of 90% grip is recommended. Applying firm pressure develops better adhesive contact and increases the adhesion. After application, adhesion increases over time. At room temperature, approximately 50% of the final strength can be achieved after 20 minutes, 90% after 24 hours, and 100% after

72 hours. The ideal temperature for applying tactile indicators with double-sided tape is between 21°C and 38°C. Applying the tape at initial temperatures below the minimum recommended is not recommended. Once the tape has been properly applied, ensure the surfaces are dry and free of condensation.

Most porous or fibrous materials (concrete, wood, etc.) must be pre-sealed to achieve a uniform surface. Some materials, such as copper, brass, and plasticized vinyl, must be primed to prevent interaction between the adhesive and the substrate. Attaching to glass in a high-humidity environment requires the use of an appropriate surface primer to ensure long-lasting, stable bonding.

Installation of T-Metal with bi-component glue

Substrates must be uniformly dry, mechanically resistant, and free of dust, loose particles, cracks, paint, wax, oil, rust, and anything else that could compromise adhesion.

The adhesive must be carefully spread on the playing surface within the empty spaces of the templates and massaged from the center outward, paying particular attention to filling the template to the edges, allowing full contact of the product with the underlying flooring and the release of any air bubbles from the sides.

The tactile indicators must be installed ensuring excellent coplanarity of the reliefs, which is also facilitated by the highly versatile templates. Given the relatively thin thickness of the tactile indicators, it is not necessary to wall them in or glue them to a suitable screed, as is required for other flooring types; they must be installed directly over the existing flooring.

Important warnings: do not glue on substrates subject to rising damp or on wet surfaces; on fresh asphalt wait at least 90 days and do not install on bituminous surfaces where there is a possibility of oil exudation.

Installation of T-Metal with dowels

T-Metal tactile indicators, in addition to being installed with factory-installed double-sided tape and bi-component glue suitable for metals, can also be installed with special dowels after drilling holes in the surface of the tactile indicators, which can also be done at the factory.

For this type of installation, the system will be supplied with special dowels and screws designed to ensure uniformity and coplanarity of the tactile indicator after installation.

To install with dowels, you will need a drill with a drill bit suitable for the size of the anchors, arrange the indicators in the appropriate templates, insert the female anchor into the hole, and secure the tactile indicator with a special screw.



Our commitment goes beyond simple numbers and technical solutions. We believe that every project is a story to be told, every product a hand extended toward a more accessible future. With passion and expertise, we design tactile paving tiles that improve mobility for everyone in the world, making the urban environment truly accessible.



JKJ S.R.L.

SEDE LEGALE:

Via Giovanni XXIII, 73
86170 Isernia (IS)
Italy

POLO PRODUTTIVO:

Via Cese prima, 80
82030 Puglianello (BN) Italy
ph. +39 0824 946 486

SEDE COMMERCIALE:

Via Ferrovia, 105
80040 S. Gennaro Ves. (NA) Italy
ph. +39 081 193 09 124
Fax +39 081 528 61 69



www.jkj.it



info@jkj.it

